

AQUATOP 1 YEAR LIMITED WARRANTY

Products are guaranteed by AQUATOP® Aquatic Supplies to the original purchaser against defective material and workmanship under normal use for a period of 1 year from the date of the original purchase through an Authorized Aquatop Reseller.

Products have no warranty if:

- 1.) The product has been serviced, modified or tampered with by anyone other than AQUATOP Aquatic Supplies,
- 2.) The product has been abused or damaged (including broken or cracked bulbs), and/ or
- 3.) The product has been transported without proper packaging,
- 4.) The product was purchased from an Unauthorized Reseller.

Note: All sales from Amazon and Ebay (regardless of seller) do not qualify for any warranty coverage. Please see www.aquatop.com for more information.

WARRANTY LIABILITY DISCLAIMER

In no event will Aquatop® be liable for any consequential or incidental damages, including but not limited to, lost sea life, personal injury, property damage, equipment damage, lost profits, lost wages, lost savings, lost income, etc., arising out of the use of any Aquatop products.

For more information on tank health and maintenance as well as other products carried by Aquatop, visit our website: www.aquatop.com

775 Columbia St. Brea, CA 92821

Tel: (888) 915-2782 (562) 697-9860

www.aquatop.com

V1 /2022



AQUATOP®

FORZA PF-ZERO

ZERO BYPASS HANG-ON FILTER



100%
Zero
Bypass

66
GPH
FLOW RATE

FOR
AQUARIUM
UP TO
20
GALLONS

FORZA PF-ZERO Zero Bypass Hang-on Filter Manual V1 /2022

OWNER'S MANUAL

INTRODUCTION

Thank you for purchasing Aquatop's FORZA PF-ZERO zero bypass hang-on filter. This compact, powerful, yet quiet hang-on back filter takes a three-dimensional approach to Zero Bypass. Aquarium water is pre-filtered before passing through the pump and entering the filter cartridge. Water enters the enclosed filter cartridge filled with activated carbon and can only exit one way, past the activated carbon and through the filter cartridge! This ingenious design filters every single drop of water, making the Aquatop's FORZA PF-ZERO zero bypass hang-on filter one of the most efficient aquarium filters on the market.

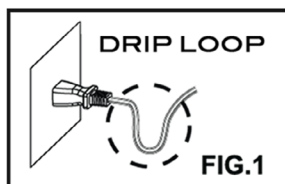
WARNING & SAFETY INFORMATION

Before installing the FORZA PF-ZERO zero bypass hang-on filter, read and follow these important warnings and safety information.

NOTE: Before installing the unit, check for any signs of damage to the device. If there are any signs of damage to the device, power cable or plug do not use, return to place of original purchase.

NOTE: It is your sole responsibility to verify that the plug and the receptacle are clean and free of moisture and salt buildup at all times. The receptacle must be free of water, salt, calcium, magnesium and dust. Failure to do so can cause fire, damage to property, and permanent damage to the product and personal injury not limited to loss of life.

1. Read and follow all instructions.
2. A drip loop must be used with all electrical aquarium devices. A drip loop is a self-made part of the cord hanging below the receptacle. (See Fig. 1)



3. A GFCI (Ground Fault Circuit Interrupter) should be used in the branch circuit supplying all power to water pumps and electrical aquarium equipment. If you do not have a GFCI, we strongly recommend having a qualified electrician install one prior to operating any aquarium component.
4. Make sure to unplug all electrical aquarium devices before installing the unit or performing any type of maintenance on the unit.
5. Do not plug into extension cord/power strip
6. Use this product for its intended purpose only.
7. Never yank or pull the cord from the electrical outlet.
8. Do not operate if the plug or wire is damaged.
9. Verify that hands are dry prior to disconnecting the power.
10. To reduce the risks of electrocution, keep all connections dry.
11. For indoor use only.
12. If any of the electrical components get wet, unplug immediately.
13. Do not use soaps or detergents when cleaning the filter.
14. Make sure the device is completely dry before connecting.
15. Keep this product away from children and those who are unfamiliar with the unit and its instruction manual.

SET-UP & INSTALLATION

Tip: If an Air Pump is used for aeration, keep the air bubbles out of direct contact with the unit's water intake. The air bubbles will affect the unit's performance and possibly cause damage not covered by warranty.

1. Remove the unit and its contents from the box and shrink-wrapped packaging. With clean, freshwater rinse the filter housing, filter lid, Intake Tubing, and Pre-filter Sponge. Dry off with soft, dry cloth then reassemble the unit's components. (See Fig. 2)
2. Install the unit on desired aquarium panel and use the Leveler Tab to adjust how the unit sits on the aquarium edge. The unit should be completely level. (See Fig. 3)

Fig. 2

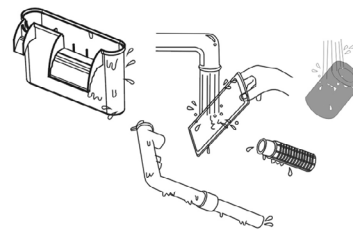
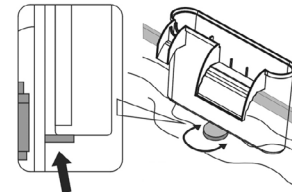


Fig. 3



3. Insert new Filter Cartridge with Activated Carbon. (See Fig. 4) Attach Filter Cartridge with Activated Carbon to the exit of the unit's Intake Plumbing. (Refer to Flow Diagram on box for connection point).
4. Before placing the lid onto the unit, fill the unit with aquarium water until it exits the spillway, then plug into GFCI and make a Drip-Loop. Use the Flow Control Knob to adjust to desired flow rate located at the top of the Intake Plumbing. (See Fig. 5)

Fig. 4

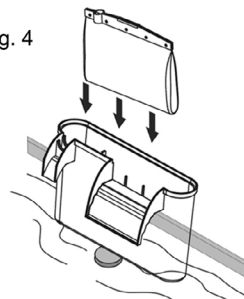
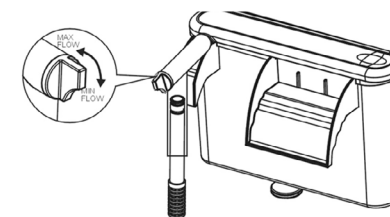


Fig. 5



NOTE: Under normal operating conditions, the unit will initially make sounds for 3 to 5 minutes and then run quietly. The sound being emitted is trapped air exiting filter components as well as air leaving the porous structure of the Activated Carbon.

SPECIFICATIONS

PRODUCT SPECIFICATIONS

MODEL	FLOW RATE	CAPACITY	POWER	VOLT/FREQ
PF-ZERO	66 GPH	20 GAL	4W	110-120V/ 60HZ