

AQUATOP 1 YEAR LIMITED WARRANTY

Products are guaranteed by AQUATOP® Aquatic Supplies to the original purchase against defective material and workmanship under normal use for a period of 1 year from the date of the original purchase through an Authorized Aquatop Reseller.

Products have no warranty if:

- 1.) The product has been serviced, modified or tampered with by anyone other than AQUATOP Aquatic Supplies,
- 2.) The product has been abused or damaged (including broken or cracked bulbs), and/ or
- 3.) The product has been transported without proper packaging,
- 4.) The product was purchased from an Unauthorized Reseller.

Note: All sales from Amazon and Ebay (regardless of seller) do not qualify for any warranty coverage. Please see www.aquatop.com for more information.

AQUATOP EXCLUSIVE 1 + 1 EXTENDED WARRANTY

The additional 1 Year Extended Warranty applies when you REGISTER online with Aquatop. Register your Extended Warranty at www.aquatop.com

Note: Extended warranty is available for qualifying products. See www.aquatop.com for a list of qualifying products.

- 1.0. Terms and Conditions of Guarantee.
- 1.1. Aquatop warrants to the purchaser, for 1 Year from date of original purchase through an Authorized Aquatop Reseller, to repair or replace goods where fault is found due to defective materials or faulty workmanship and where goods do not operate in accordance with the instructions.
- 1.2. All claims for repair or replacement must be made at place of purchase.
- 1.3. The original and dated Proof of Purchase (receipt) must be supplied with all goods claims. Please also provide this Guarantee where possible.
- 1.4. All goods subject to claim under Guarantee should be prepared for transportation in the original packaging or other comparable packaging which offers the same degree of protection.
- 1.5. Where goods are repaired or replaced under Guarantee, these goods are Guaranteed for the remainder of either the original Guarantee or Extended Guarantee period.
- 1.6. Where claims on inspection reveal goods are in normal working order, Aquatop will request reimbursement of all reasonable costs incurred.

WARRANTY LIABILITY DISCLAIMER

In no event will Aquatop® be liable for any consequential or incidental damages, including but not limited to, lost sea life, personal injury, property damage, equipment damage, lost profits, lost wages, lost savings, lost income, etc., arising out of the use of any Aquatop products.

For more information on tank health and maintenance as well as other products carried by Aquatop,

visit our website: www.aquatop.com

775 Columbia St. Brea, CA 92821
Tel: (888) 915-27821 (562) 697-9860

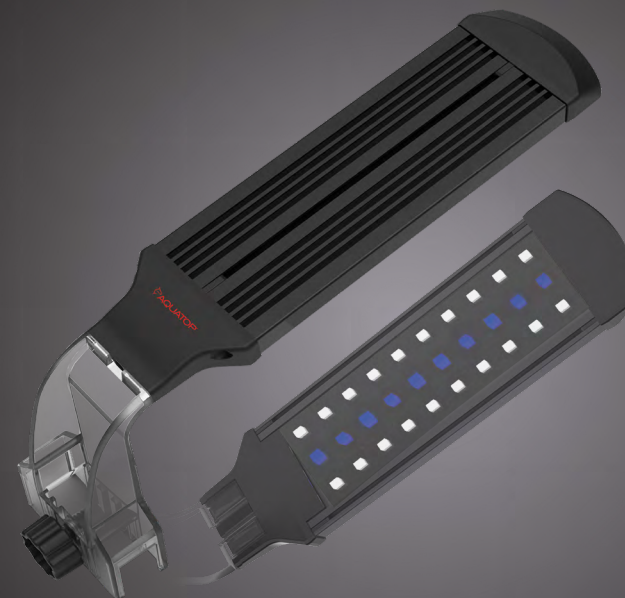
www.aquatop.com

V1 /2021



SKYAQUA MARINE MINI

LED AQUARIUM LIGHT SYSTEMS



SKYAQUA MARINE MINI LED Aquarium Light System Manual V1/2021

OWNER'S MANUAL

Thank you for choosing Aquatop's SkyAqua Marine LED Series of aquarium lights. The SkyAqua Marine Series raises the bar for aquarium keepers by combining style and technology. Each specially engineered lighting system mimics the shimmer of natural sunlight, produces minimal heat, offers a fanless design for pin drop silence & provides general illumination for your aquatic organisms. With its adjustable clamp mount, the SkyAqua Marine Mini is perfect for most all small aquariums and refugiums, both frameless and framed aquariums up to .6 inches. Please reference this manual for any questions and directions for use. May Aquatop's SkyAqua Marine LED Series of aquarium lights serve you and your aquatic creatures well.

WARNINGS & SAFEGAURDS

Note: Never put the unit inside the aquarium or immerse in water. It is your sole responsibility to verify that the plug and the receptacle are clean and free of moisture and salt build up at all times. The receptacle must be free of water, salt, calcium, magnesium and dust. Failure to do so can cause fire, damage to property, and permanent damage to the product and personal injury not limited to loss of life.

- Read and follow all instructions.
- A drip loop must be used with all electrical aquarium devices.
- A drip loop is a self-made part of the cord hanging below the receptacle. (See Fig. 1)
- A GFCI (Ground Fault Circuit Interrupter) should be used in the branch circuit supplying all power to water pumps and electrical aquarium equipment. If you do not have a GFCI, we strongly recommend having a qualified electrician install one prior to operating any aquarium component.
- Do not plug into extension cord/power strip.
- Use this product for its intended purpose only.
- Never yank or pull the cord from the electrical outlet.
- Do not operate if the plug or wire is damaged.
- Verify that hands are dry prior to disconnecting the power.
- To reduce the risks of electrocution, keep all connections dry.
- Make sure to unplug all electrical aquarium devices before installing the unit or performing any type of maintenance on the unit.
- Before cleaning the unit unplug from power source. Use a clean damp cloth. Let unit completely dry before plugging back into power source.
- For indoor use only.
- If any of the electrical components get wet, unplug immediately.
- Do not use soaps or detergents when cleaning the exterior surface of this device.
- Make sure the device is completely dry before connecting.
- Keep this product away from children and those who are unfamiliar with the unit and its instruction manual.



TO OPERATE LIGHT

1. Once light is properly mounted to aquarium (see installation instructions), plug light into electrical outlet.
2. Light will turn on automatically when plugged in.
3. Inline controller on power cord has 2 function buttons marked "W" and "B" (See Fig. 2B)
4. W button will turn the white LEDs on or off. B button will turn the blue LEDs on or off.
5. Depressing B button two times will turn off all LEDs.



FIG. 2B

INSTALLATION INSTRUCTIONS

FOR AQUARIUM WITH TOP FRAME

1. Ensure glass aquarium cover is properly installed over aquarium.
2. Remove plastic mounting screw from LED light.
3. Place LED light in desired location, making sure the BACK panel of the mounting bracket is flush with the back panel of the aquarium frame.
 - Always center the fixture so that it provides maximum exposure of light to all aquarium inhabitants.
4. Insert the plastic mounting screw through the FRONT of mounting bracket. Tighten the screw so the LED light is secure on the aquarium.
5. Plug-in LED light into an acceptable outlet. Be sure to incorporate a "drip loop" on the cord.
6. Turn LED light on/off using the touch switch.

FOR AQUARIUM WITHOUT TOP FRAME

1. Ensure glass aquarium cover is properly installed over aquarium.
2. Remove plastic mounting screw from LED light.
3. Place LED light in desired location, making sure the FRONT panel of the mounting bracket is flush with the front of the glass panel.
 - Always center the fixture so that it provides maximum exposure of light to all aquarium inhabitants.
4. Insert the plastic mounting screw through the BACK of mounting bracket. Tighten the screw so the LED light is secure on the aquarium.
5. Plug-in LED light into an acceptable outlet. Be sure to incorporate a "drip loop" on the cord.
6. Turn LED light on/off using touch switch.

Warning: Please refer to the original manufacturer's owner's manual for your equipment before performing any modifications. Aquatop is not responsible for any damage incurred through installation. It is the user's sole responsibility to reference & adhere to the manufacturer's guidelines regarding the use of their products.

Note: Aquatop recommends the use of an aquarium lid when using an aquarium light. Aquatop recommends the use of a drip loop.

*See warnings and safeguards for additional information.

PRODUCT SPECIFICATIONS

Model	SKYAQUA MARINE-MINI
For Tank Sizes	up to .6" frame
White LEDS	20
Blue LEDS	10
Power	10W
Lumens	420
Color Temp	14000K
Peak PAR	60
Color Rendering index (CRI)	80
PAR	>60 AT 12"
Dominant Wave Length	465.2 nm